

TRACK CONTROL ARM



0784238 - 0794238

BMW

MOD. 1 (E 87-E 82-E 88)
3 (E 90-E 91-E 92)
X1 (E 84)

O.E. 33326782238
33326782237

TIE ROD END



0285556

BMW

MOD. X3 (F 25) - X4 (F 26)

O.E. 32106792674

AXIAL JOINT



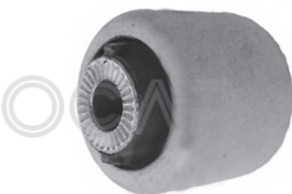
0605556

BMW

MOD. X3 (F 25) - X4 (F 26)

O.E. PART OF
32106787472 *

BUSHING



1216135

BMW

MOD. X3 (F 25) - X4 (F 26)

O.E. 31106786959

TIE ROD END



0285595

CHEVROLET - DAEWOO

MOD. AVEO (T300)

O.E. 95218393

AXIAL JOINT



0605745

CHEVROLET - DAEWOO

OPEL

MOD. TRAX
MOKKA

O.E. 9593278
1609205

AXIAL JOINT



0605745

**CHEVROLET - DAEWOO
OPEL**

MOD. TRAX

MOKKA

O.E. 95932789

1609205

BUSHING



1216240

**CHEVROLET - DAEWOO
OPEL**

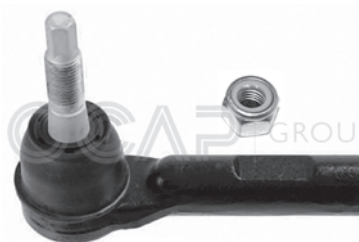
MOD. TRAX

MOKKA

O.E. PART OF:

352551 *

TIE ROD END



0285591

CHRYSLER

MOD. 300 C

O.E. 52013468AD

52013468AB

52013468AA

52013468AC

BALL JOINT



0402715

CHRYSLER

MOD. VOYAGER III

O.E. 4443405

4449553

4694747

AXIAL JOINT



0602721

CHRYSLER

MOD. VOYAGER III

VOYAGER IV

O.E. 04743935AD

4743935AD

BUSHING



1214086

DACIA

MOD. DUSTER

O.E. 8200852550

TIE ROD END



0282458

DAIHATSU

MOD. TERIOS (J1)

O.E. 45046-87402

TIE ROD END



0285760 - 0295760

DAIHATSU

MOD. TERIOS (J2)

O.E. 45046-B9080
45046-B9320
45047-B9070
45047-B9270

AXIAL JOINT



0602459

DAIHATSU

MOD. TERIOS (J1-J2)

O.E. 45503-87401
45460-87401

TRACK CONTROL ARM



0385756 - 0395756

FCA

MOD. FREEMONT (JF)

O.E. K04766424AD
K04766424AA
K04766424AB
K04766424AC

BUSHING



1216241

FCA

MOD. FREEMONT (JF)

O.E. K05168160AB

BUSHING



1216242

MOD. FREEMONT (JF)

O.E. PART OF:
K04766424AD *
K04766423AD *

AXIAL JOINT



0600476

FCA

MOD. PALIO 2V - WEEKEND
SIENA

O.E. 7079388
7079383

AXIAL JOINT



0601448

FCA

MOD. PALIO 2V - WEEKEND
SIENA
UNO
UNO MONDO

O.E. 9948292

BALL JOINT



0486494 - 0496494

FORD

MOD. KUGA (I - II)

O.E. PART OF:
1502086 *
1502087 *

TIE ROD END



0285586

FORD - MAZDA

MOD. RANGER (II)
BT-50 (CD)

O.E. 1454896
UR56-32-250
UR5632250

TIE ROD END



0295586

FORD - MAZDA

MOD. RANGER (II)
BT-50 (CD)

O.E. 1454897
UR56-32-280
UR5632280

IDLER ARM



0305586

FORD - MAZDA

MOD. RANGER (II)
BT-50 (CD)

O.E. 1454584
UA3N-32-320A
UA3N32320A

TRACK CONTROL ARM



0384366 - 0394366

HONDA

MOD. ACCORD VII (CL)
 ACCORD VII TOURER (CM)

O.E. 51350-SEA-E01
 51360-SEA-E01

BALL JOINT



0483287 - 0493287

HONDA

MOD. CIVIC VIII (FA-FD-FK-FN)

O.E. 51220-SNA-A02
 51220-SNA-A03
 51230-SNA-A02
 51230-SNA-A03

STABILIZER LINK



0503290

HONDA

MOD. CIVIC VIII (FA-FD-FK-FN)

O.E. 51320-SMG-E01
 51320SMGE01

BUSHING



1216260

HONDA

MOD. CR-V III (RE)

O.E. PART OF:
 51350-SWA-E01 *
 51360-SWA-E01 *

STABILIZER LINK



0588064 - 0598064

HONDA

MOD. CR-V III (RE)
 CR-V IV (RE)

O.E. 52320-SWA-A01
 52321-SWA-A01

BALL JOINT



0403295

HONDA

MOD. JAZZ III (GE)

O.E. PART OF:
 51350-TF0-030 *
 51360-TF0-030 *

TIE ROD END



0282769 - 0292769

HYUNDAI - KIA

MOD. ACCENT (MC)
RIO II (JB)

O.E. 56820-1E900
56820-1G000
56820-1E000
56820-1G900

BALL JOINT



0402809

HYUNDAI

MOD. H-1 - STAREX

O.E. 54530-4A000
54530-4AA00

TIE ROD END



0284075 - 0294075

HYUNDAI - KIA

MOD. I20 (PB - PBT)
Ix20 (JC)
SOUL (AM-PS)
VENGA (YN)

O.E. 56820-2K050
56820-2K000

AXIAL JOINT



0604076

HYUNDAI

MOD. I20 (PB - PBT)

O.E. 57724-1J000

AXIAL JOINT



0604070

HYUNDAI - KIA

MOD. I30 - I30 CW (FD)
CEE'D - PRO CEE'D (ED)

O.E. 56540-2H000

AXIAL JOINT



0605496

HYUNDAI

MOD. I40 - I40 CW (VF)

O.E. 57724-3Z000

STABILIZER LINK



0582764 - 0592764

HYUNDAI

MOD. SANTA FE' (SM)

O.E. 55540-26600
55540-26700
55530-26600
55530-26700

BALL JOINT



0408094

KIA

MOD. PICANTO (TA)
RIO III (UB)
SOUL (AM-PS)

O.E. 54530-2K000

BUSHING



1216177

KIA

MOD. RIO III (UB)

O.E. 54551-1J000

BALL JOINT



0405348

LAND ROVER

MOD. RANGE ROVER (III)

O.E. RBK500210
RBK000012
RBK500150

STABILIZER LINK



0585691 - 0595691

LAND ROVER

MOD. RANGE ROVER SPORT (LS)

O.E. RBM500140
RBM500150

BALL JOINT



0404428

MAZDA

MOD. 3 (BK - BL)
5 (CR19 - CW)
MPV I (LV)
MPV II (LW)
O.E. BK3P-34-300D
LC62-32-280

TRACK CONTROL ARM



0385742 - 0395742

MERCEDES

MOD. A CLASS (176)
B CLASS (246)
CLA CLASS (117)

O.E. 2463304800
2463301807
2463304700
2463301707

TRACK CONTROL ARM



0383221 - 0393221

MERCEDES

MOD. C CLASS (204)
SLK CLASS (172)

O.E. 2043306811
2043303211
2043306711
2043303111

BUSHING



1215958

MERCEDES

MOD. C CLASS (204)
SLK CLASS (172)

O.E. 2043330414

TRACK CONTROL ARM



0383225 - 0393225

MERCEDES

MOD. C CLASS (204)
C CLASS (205)
E CLASS (212)

O.E. 2043501606
2053506203
2043501506
2053506103

BUSHING



1216190

MERCEDES

MOD. C CLASS (204)
GLK CLASS (204)
SLK CLASS (172)

O.E. 2043331114

BUSHING



1216256

MERCEDES

MOD. C CLASS (205)

O.E. PART OF:
2053305601 *
2053305501 *
2053330314

BUSHING



1214224

MERCEDES

MOD. C CLASS (203)
CLK CLASS (209)

O.E. 2033232185
2033230585

BUSHING



1214223

MERCEDES - VW

MOD. SPRINTER (901>904 - 906)
CRAFTER (I)
LT 28 - 35 - 46

O.E. 9043260881

TIE ROD END



0187342

MERCEDES - NEOPLAN

MOD. BUS: O 309 D
T2/L:
508/DG-608/D-613/D
UNIMOG U

O.E. 0004604348
0003381810
0003305635
0004631129

ENGINE MOUNT



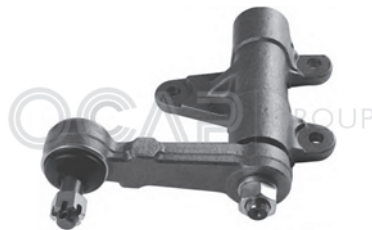
1225338

MERCEDES

MOD. E CLASS (210-211)
S CLASS (220)
SLK CLASS (170)

O.E. 2202401917
2022404917
2102401617
2112400317

IDLER ARM



0304123

MITSUBISHI

MOD. L200 4WD (K74T-K75T)

O.E. MR-296272

BALL JOINT



0403088

MITSUBISHI

MOD. L200 4WD (KAOT)
PAJERO III
PAJERO IV

O.E. 4010A015
MR-496792
4010A099

TIE ROD END



0285739 - 0295739

NISSAN

MOD. MURANO (Z51)

O.E. D8520-1AA0A
D8E20-1AA0A
D8640-1AA0A
D8F40-1AA0A

AXIAL JOINT



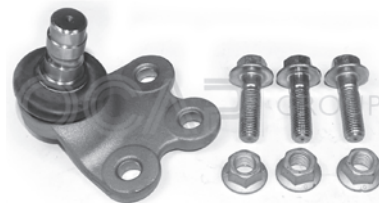
0605769

PEUGEOT

MOD. 308 II

O.E. 1611242380

BALL JOINT



0405741

PEUGEOT

MOD. 508

O.E. 364083
3640.83

BUSHING



1216207

PEUGEOT

MOD. 508

O.E. PART OF:
3521V1 *
3520Y0 *

AXIAL JOINT



0603147

PSA

MOD. BERLINGO
PARTNER

O.E. 3812F4

AXIAL JOINT



0605171

PSA

MOD. C5 (RD-TD)
508

O.E. PART OF:
3812F3 *

AXIAL JOINT



0605740

RENAULT

MOD. LATITUDE

O.E. 485218799R

STABILIZER LINK



0504172

RENAULT

MOD. MEGANE II

O.E. 8200166160
8200669066

AXIAL JOINT



0606490

RENAULT

MOD. MEGANE I - SCENIC I

O.E. 7701471885

TRACK CONTROL ARM



0302838

SUZUKI

MOD. IGNIS I (FH)

O.E. 45200-76G00
45200-76G20

TRACK CONTROL ARM



0784338 - 0794338

TOYOTA

MOD. CAMRY (V30)
PREVIA (ACR3)

O.E. 48068-28120
48068-33050
48069-28120
48069-33050

IDLER ARM



0303792

TOYOTA

MOD. HILUX II

O.E. 45490-39475
45490-39476

TRACK CONTROL ARM



0785751 - 0795751

VAG

MOD. A3 (8V1-8VA) - LEON (5F)

OCTAVIA (5E3-5E5)

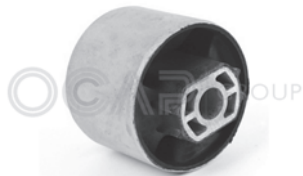
GOLF VII (5G1-BA5)

PASSAT (3G2-3G5)

O.E. 5Q0505224D

5Q0505223D

BUSHING



1216070

VAG

MOD. A3 - TT - ALTEA - LEON

OCTAVIA - SUPERB

BEETLE - GOLF V-VI-VII

JETTA III-IV - PASSAT

O.E. 1K0505541C

1K0505541D

BUSHING



1216183

VAG

MOD. A4

Q5

MACAN

O.E. 8K0407183D

TRACK CONTROL ARM



0785767 - 0795767

VAG

MOD. BEETLE (5C1)

O.E. 561407152C

561407152A

561407151C

561407151A

TRACK CONTROL ARM



0785768 - 0795768

VAG

MOD. BEETLE (5C1)

O.E. 561407152C *

561407152A *

561407151C *

561407151A *

TRACK CONTROL ARM



0784283 - 0794283

VAG

MOD. SUPERB - YETI
(3T4-3T5-5L)

O.E. 1K0407152BB

1K0407152BE

1K0407151BB

1K0407151BE

AXIAL JOINT



0608089

VOLVO

MOD. XC60 I

O.E. 31280408